

Tourmaline Pencil for Ugly-C

by John Bailey, 2015

Angles for R.I. = 1.620

21 + 4 girdles = 25 facets

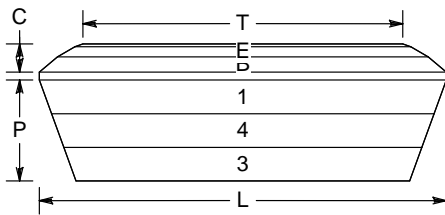
2-fold, mirror-image symmetry

96 index

$L/W = 2.000$ $T/W = 1.571$ $U/W = 0.571$

$P/W = 0.495$ $C/W = 0.139$

$Vol./W^3 = 0.785$



PAVILION

- G1 90.00° 96-48 Calibrate Width
- G2 90.00° 24-72 Calibrate Length
- 1 50.00° 96-48 Locate Girdle
- 2 70.00° 24-72 Even Girdle
- 3 40.00° 96-48 Make 1/2 Pavilion depth
- 4 45.00° 96-48 Divide Pavilion depth to 3rds

CROWN

- A 40.00° 24-72 Set Girdle width
- B 40.00° 96-48 Even Girdle
- D 30.00° 24-72 Even Step
- E 30.00° 96-48 Even Step
- F 20.00° 24-72 Step
- G 20.00° 96-48 Even Step
- T 0.00° Table

Simple pencil cut for Ugly-C Tourmaline

E:\GEMCAD\CompareUgly.gem